



Wilberfoss Park Hull Road, York, YO41 5PF

Guide Price £50,000



Lodge 7, Wilberfoss Park Hull Road, York, YO41 5PF

£50,000

OPEN DAY! SUNDAY 24TH MAY 2026 AT 12 NOON - 6PM.
PLEASE CALL US TODAY TO BOOK AN APPOINTMENT.

BRAND NEW TWO BEDROOM LODGE HOME ON A CORNER PLOT

Set on this lovely 52 WEEK LICENCE PARK near the popular village of Wilberfoss with close proximity to York City Centre and the stunning East Yorkshire countryside.

Set in a fabulous position on the site, it fully comprises entrance hallway, open plan kitchen with modern units and integrated appliances, lounge/dining area with French doors onto large timber deck, two good double bedrooms and a modern three piece shower room.

To the outside is a wrap-around decked area with lawned garden and parking

An internal viewing is highly recommended to appreciate this stunning lodge! FINANCE AVAILABLE!

Description

Entrance Hallway

Open Plan Living/Dining

Kitchen Area

Bedroom 1

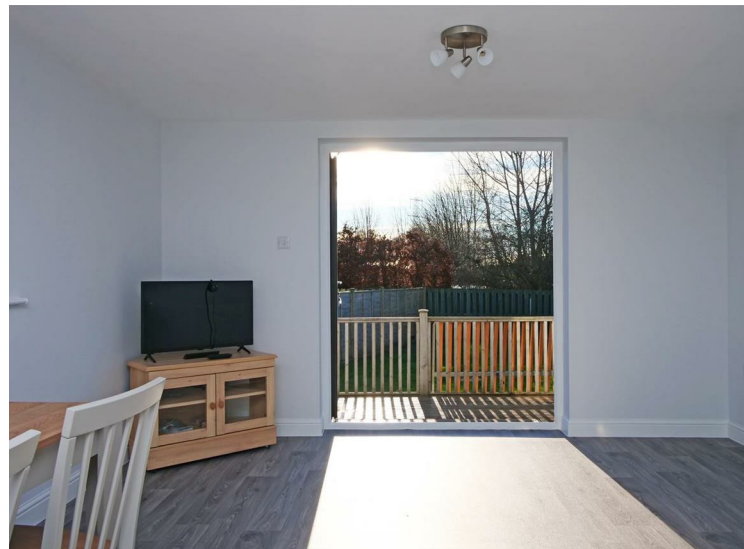
Bedroom 2

Shower Room

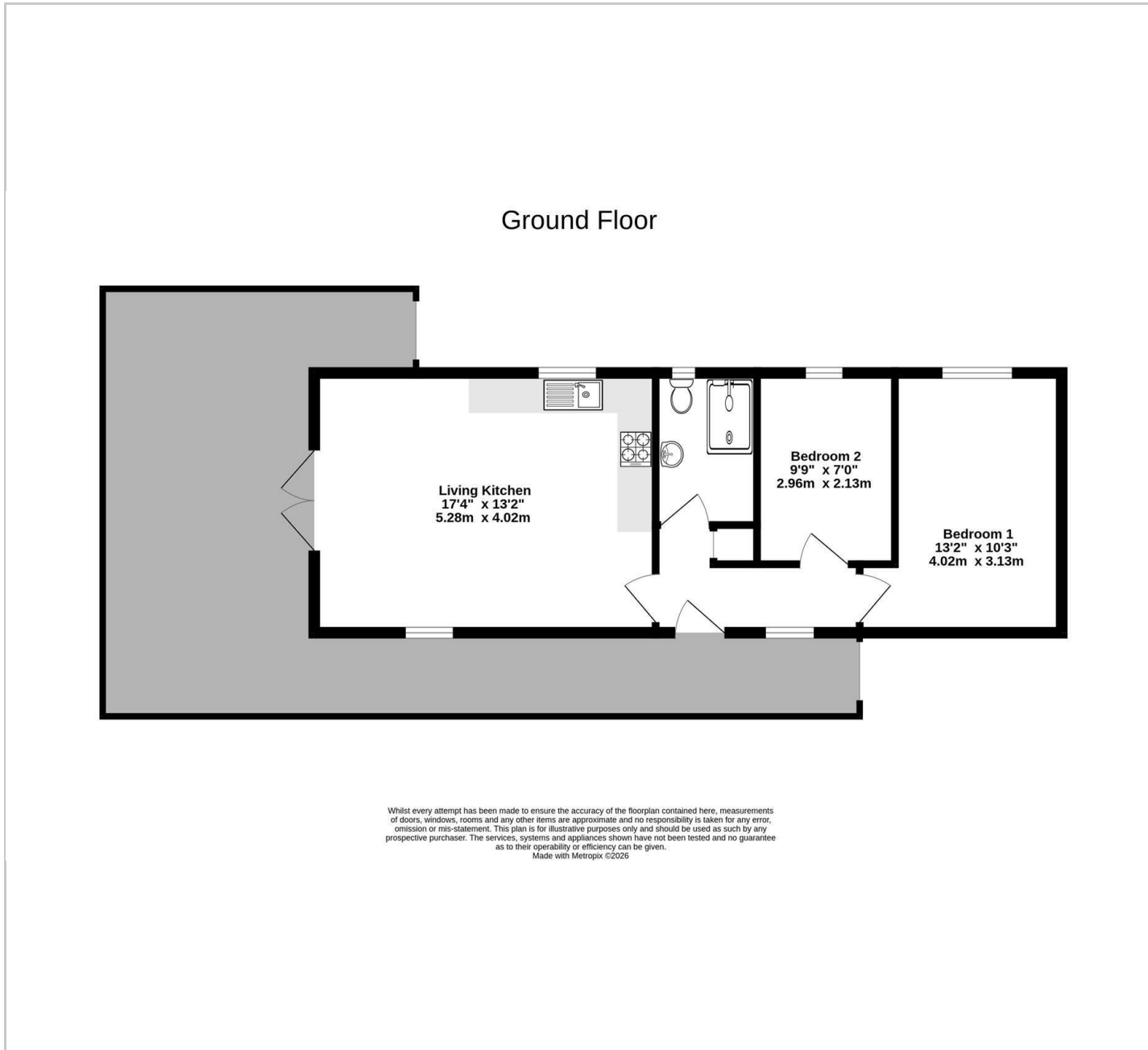


Features

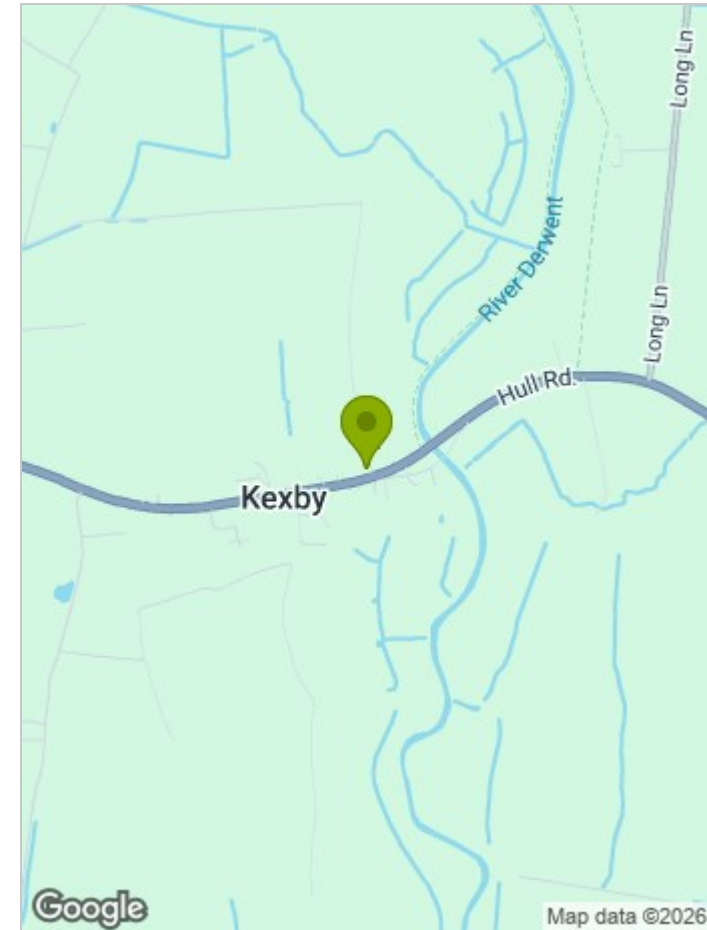
- OPEN DAY! SUNDAY 24TH MAY 2026 AT 12 NOON - 6PM
- PLEASE CALL CHURCHILLS TODAY TO BOOK AN APPOINTMENT.
- Ideal Holiday Let Or Weekend Retreat!
- Two Double Bedrooms
- New 52 Week Licence Holiday Park
- Viewing Highly Recommended



FLOOR PLAN



LOCATION



EPC

These particulars, whilst believed to be accurate are set out as a general outline only for guidance and do not constitute any part of an offer or contract. Intending purchasers should not rely on them as statements of representation of fact, but must satisfy themselves by inspection or otherwise as to their accuracy. No person in this firm's employment has the authority to make or give any representation or warranty in respect of the property.